

# PAST MATTERS

CAMPERDOWNHISTORY.ORG.AU

WE ACKNOWLEDGE THE TRADITIONAL CUSTODIANS OF CAMPERDOWN AND DISTRICT, THE DJARGURD WURRONG PEOPLE, AND PAY OUR RESPECTS TO THEIR ELDERS - PAST, PRESENT AND EMERGING.

VOLUME 32 - NO. 1

EMAIL ISSN: 2209-2617

INCORPORATION NO: A0020588V

JAN 2022



CAMPERDOWN & DISTRICT  
HISTORICAL SOCIETY INC.

PO Box 243, Camperdown 3260

AFN: 54 877 433 820 Inc No: A0020588V

## INTRODUCTION & WELCOME TO NEW MEMBERS

Welcome to our new members **Michael Lines-Kelly, Colin McLeod and Rod Wilcocks**. Thanks also to members who have renewed for 2021/22 and those who have generously donated to our Society over the last year.

In this edition you will find a very interesting article by committee member **Lyle Tune** on the construction of a Hoffman chimney at the Camperdown Butter Factory in 1915. The ingenious contractor was William Henry Clarke who lived in the Camperdown district from 1910-23. This chimney was demolished during the 1950s.

**Pat Walsh's** talk about the Walsh family of South Purrumbete has been rescheduled for **Sunday 20 February at 2 pm in Camperdown's Botanic Gardens** - please email us if you wish to attend and we can advise any venue changes. *Pat's book about his family Milking our Memories was published in 2020.*

The **Aboriginal History and Culture Workshop and Bus Tour** will now be held on **5-6 March**. Our fingers are crossed that both these events will now finally take place.

**Maree Belyea** has been as busy as ever at the Heritage Centre with research requests - her report appears on page 5. Maree also arranged our very enjoyable 2021 Christmas lunch at the Mount Elephant Visitors Centre at Derrinalum on Saturday 4 December. As well as a welcome by **Lesley Brown** we were given an informative talk about Mt Elephant by local expert **Chris Lang**.

I am pleased to advise our Society now has **EFTPOS** facilities at the Camperdown Heritage Centre for payments such as memberships, book purchases, events etc.

We hope you enjoy this newsletter.

Rob Wuchatsch  
President

## COMING EVENTS

Pat Walsh Talk - Sunday 20th February @ 2pm, to be held in the Botanic Gardens, please RSVP via email so we can advise any changes, and look for updates on Facebook.

Aboriginal Workshop & Tour - 5th & 6th March.

July 1st - 3rd Camperdown Robert Burns Festival.

### Camperdown Heritage Centre

241 Manifold St.,  
Camperdown, Victoria 3260

### Postal Address:

PO Box 243,  
Camperdown, Vic 3260  
[camperdowndhs@gmail.com](mailto:camperdowndhs@gmail.com)  
[camperdownhistory.org.au](http://camperdownhistory.org.au)  
[facebook/camperdownhistory](https://facebook.com/camperdownhistory)

*\*closed in lockdowns*

### Opening Hours:

Tuesdays 10am-3pm  
& 1st Sunday of month  
(Market Day) 10am-3pm  
or by appointment.

### President:

Rob Wuchatsch

### Secretary:

Maree Belyea

### Treasurer:

Jan Whamond

### Committee:

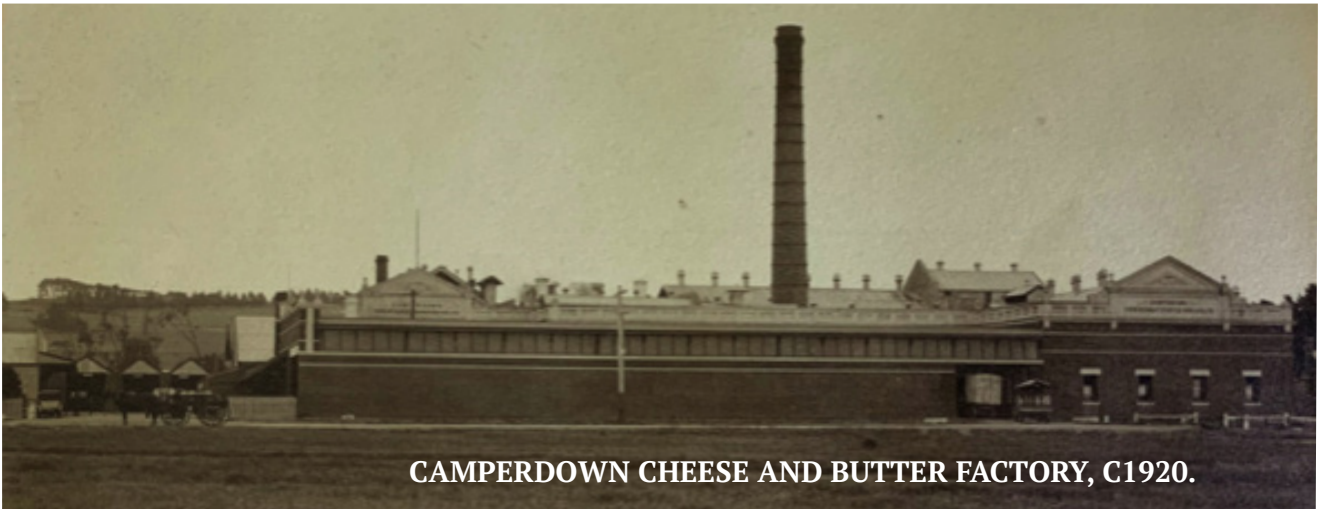
Bob Lambell  
Gillian Senior  
Angela Preiss  
Maureen Hemley  
Lyle Tune

### IN THIS ISSUE:

- P 1. Welcome & Coming Events
- P 2-4. A chimney is not just...
- P 5. Bexley/Woolley update & Research Requests
- P 6. H.C. Christmas Gathering & Mt Elephant Event Report, Grant News, & Pat Walsh Talk Advert
- P 7. Cable Tram Cables
- P 8-10. Willie Ah Soon

# A CHIMNEY IS NOT JUST ABOUT SMOKE

Article by Lyle Tune.



**CAMPERDOWN CHEESE AND BUTTER FACTORY, C1920.**

The CDHS has received correspondence from Barbara Hossen and Jennifer Collins regarding work their grandfather William Henry CLARKE carried out in building the Hoffman Chimney Stack as part of the 1915 rebuild of the Camperdown Butter Factory. This chimney was demolished as part of another rebuild in the 1950's.

In notes Mr. Clarke made in 1950 he explains in some detail the construction and requirements of that chimney, as follows:

*At the Camperdown Butter Factory I took on a contract to build a big Hoffman Chimney Stack – one hundred and thirty feet high. That was a big job. I had to find the best bricklayers. I brought them from Geelong and Melbourne. This chimney was, and is, for it still stands, eighteen feet diameter at the base. The ground was excavated about twenty feet deep to make a foundation right on rock. This hole was filled with concrete and stone, reinforced with lots of steel bars until it was level with the surface of the ground. Then the brickwork started. The walls of this stack were two feet four inches thick. There were two nine inch walls with ten inches space between the two walls. Of course, these walls were in circles – one circle inside the other. At the bottom of the inner circle there were vents – about two feet long and six inches wide. The vents were placed at specified distances right up to the top. They caused a great draught. There were hundreds of thousands of bricks put into this stack and it had to be finished very smoothly on each side of each wall. Even with eight bricklayers, you would not see much for a day's work, for it was so exact a job they could not hurry it. It took tons of sand and cement, lime and mortar and fire clay for all the inside had to be finished with fire bricks. It took a lot of scaffolding for this job. The scaffolding was all set up inside the stack and then we had a derrick that had to be lengthened as the stack went up. This derrick had a winch built at the bottom that used to wind up all the builders' requirements, such as bricks, mortar, fire clay and fire bricks.*

*Then I had to keep a man on top to take delivery of all of these items and he would supply or deliver to each bricklayer and that kept him very busy. The bricklayers nearest the landing place could get their own. This job went on for weeks and it turned into about three months before it was finished. When it was finished it was a great job. People interested came from all over Australia to see it and if I had been able to go away, I could have had quite a lot of the stacks to build for this was the first Hoffman stack built in Australia. There are thousands now and they have proved a great success. At the bottom of this stack we had to build a sort of tunnel from the boilers to the stack and the draught in this tunnel would nearly sweep a man along. This tunnel was led past six big boilers, two Lancasters, two Cornish and two great boilers that I put in, called Babcock and Wilcox boilers. These latter boilers were great steam generators. They were all tubes, big tubes – and the fire burned up among the tubes, so it did not take nearly as much fire to heat these boilers as it did the Lancasters and Cornish. I put in all the boilers and the steam engines they drove. It also took a lot of steam to supply the wash troughs and other parts.*

William Henry CLARKE was born in 1881, his parents being farmers near Ballarat. He married in 1903 and ventured into the Camperdown district around 1910 when he purchased an acre of land at Berrybank, on the corner of two main roads and built a blacksmiths shop. This was a totally new venture and about 6 months after meeting the initial blacksmithing needs of the area he sold his land and business.

Clarke then took employment with the Hampden Shire Council, working under Mr. A. C. Mickle, Shire Engineer and road works Overseers Mr. Harvey, Terang; Mr. Sandy McMellon, Camperdown; and Mr. Perkins, Lismore.

(A. C. Mickle was Shire Engineer from 1894 to 1932 and a Trustee of the Camperdown Public Park

## A CHIMNEY IS NOT JUST ABOUT SMOKE CONTINUED...

from 1899 to 1931; the Shire's road maintenance and construction network with three overseers located as indicated above (1910) remained in place until Victorian Council amalgamations took place in 1994.)

Clarke refers to Hampden Shire as being "one of the richest in Australia".

Mr. Clarke's initial position was as engine driver for the Council's traction engine on the stone crusher. Some industrial relations and safety issues over conditions on the stone crusher raised by the other men, together with Clarke's skills and initiative led Mr. Mickle to assign Clarke the task of designing and building 'something' to load stone onto the crusher platform to reduce manual labour and the use of barrows.

**STONE CRUSHER AT WORK NEAR GNOUTUK  
THIS WAS THE LABOUR INTENSIVE ONE  
USED PRIOR TO WILLIAM CLARKE'S ADDI-  
TIONS. (REFER CHRONICLE ARTICLE)**



Mickle, as Shire Engineer, was only too happy to spread the word to other Councils of Clarke's fine work and to support his move into private enterprise.

The **Camperdown Chronicle** of the day 15 December 1914 reported as follows:

### **New Elevator.**

*On Thursday last Mr. William Clarke, engineer, of Camperdown, gave a demonstration of the working of an elevating apparatus, with self-feeder attached, for conveying spalls to and feeding stonecrushers. A large number of people were present, including councillors representing; Camperdown, Bannockburn, Corio, Colac and Barrabool Shires. Contractors interested in this class of machinery as far as Warrnambool and Geelong also attended.*

*The machine, which was recently invented by Mr. Clarke, was very favourably commented upon, and it is claimed for it that it is the only one of many similar inventions that satisfactorily performs the work al-*

*lotted to it as mentioned above. The inventor has put three years hard work into the development of his idea with, to him, most satisfactory results.*

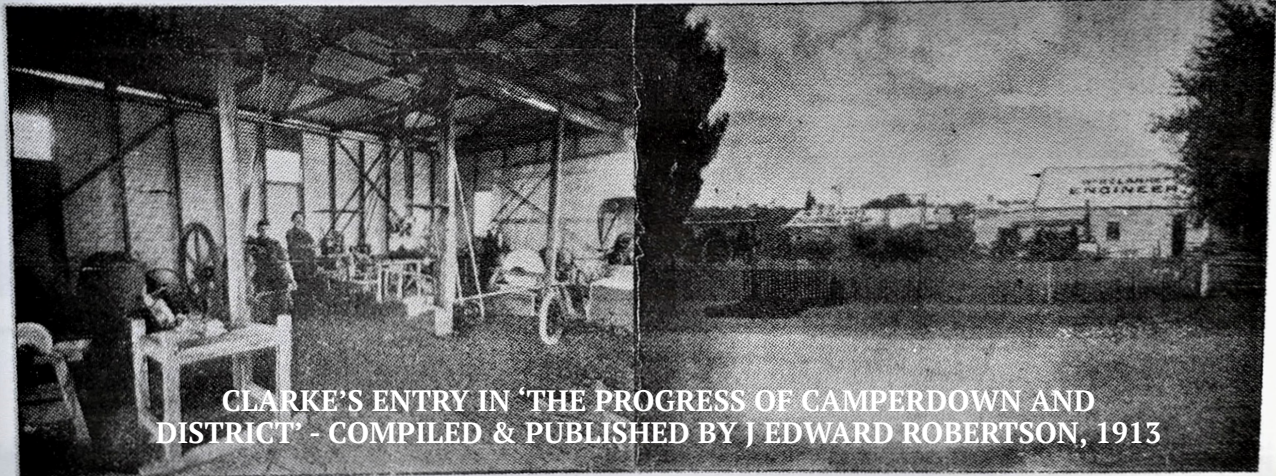
*The apparatus has a self-feeder attachment, the stone going automatically from the trucks straight into the jaws of the crusher, thereby obviating the necessity of picking all the stone twice. It also saves one feeder. It is built all on its own transport, and there is nothing whatever attached to the crusher except the self-feeder shoot. The advantages of this are that it takes all the strain off the crusher, making the crusher about three tons lighter than less modern machines.*

*There is a considerable advantage in the saving of time in packing up and setting and shifting, as this apparatus is always set ready for working the big main lines. Winch gear, trucks, and turntable are all on the one frame and the apparatus has only to be pulled beside the crusher, and all is ready for work. The truck is even on the line and there is no shifting of lines, and no trucks to unload, like with the old style. This new design carries all the lines, trucks and all necessary gear on its own transport, thereby saving a transport waggon. The winch is operated by the men on the ground so as not to over tax the engine-driver. It is also built in such a way that when the truck gets to the top of the line—that is, the tipping position—the winch is thrown out of gear in order to make it possible for men to pull the truck right over the top. The apparatus consists of 132 feet of double rails—sufficient to work out a heap of spalls three chains square; the big main line, 30ft. long; two trucks, one turntable, the apparatus itself, self-feeder, shoot ropes, shackles, bolts and chains complete. It is possible to work the machine with three men loading trucks, one feeder, and one man on screening—making a total of five, not including the engine-driver. It makes the work much easier, and consequently experts are not needed to work it. It may be worked in wet weather, there being no barrows to push through the mud or planks to become slippery. In hot weather the men are out of the dust. Also, the cost of crushing is reduced nearly 50 per cent., while it is claimed for the machine that it will put through 10 per cent, more work than the old style apparatus. As a result of the demonstration, Mr. W. Long, contractor, of Warrnambool, purchased the machine with which the demonstration was made, and the inventor anticipates other orders shortly. **Mr. Clarke has been warmly congratulated on his ingenuity in contriving this invention, and it is generally hoped by his friends that he will be well rewarded for the pains taken and the work put into the machine.***

While in Camperdown, Clarke married for the second time, to Jean, the daughter of Richard Morrison from Stonyford. Clarke also had a sawmill setup in Camperdown and another sawmill at Brucknell. He employed at times Jean's brother Sid Morrison a recently returned First World War soldier.

## A CHIMNEY IS NOT JUST ABOUT SMOKE CONTINUED...

# W. H. CLARKE'S Engineering Factory .: Camperdown



CLARKE'S ENTRY IN 'THE PROGRESS OF CAMPERDOWN AND DISTRICT' - COMPILED & PUBLISHED BY J EDWARD ROBERTSON, 1913

Another progressive business but recently established in Camperdown is the commodious engineering factory, lately finished and equipped in the most modern and complete manner by Mr Wm. H. Clarke, a practical and thorough engineer. The machinery, which is driven by a powerful electric motor, comprises various drills, lathes, sawing, punching machines, etc. With such up-to-date appliances, the

proprietor is enabled to handle and complete all engineering work expeditiously and thoroughly. Several large contracts have been recently completed for the shire council, and amongst the work noticed in hand at the time of the writer's inspection was a stone crusher, which appears to be being almost rebuilt at the factory. Motor car repairs are executed promptly.

Around 1921 several hundred acres were purchased at Bullaharre from Ralph Cope and a new home and sawmill built there. A manager was employed at the Camperdown engineering works.

In 1923 Bullaharre was sold and a property called "Krukanong" (likely Koreetnung) about six miles out of Camperdown was purchased for dairying. Dairying on the new property was not a success.

Also in 1923 'early in the year, we sold the stone crusher as a going concern, to a man named Reardon.' This was possibly Riordon Bros. who were quarrying in Colac in 1927. Riordon Bros. was a well-known quarrying name in the Camperdown and Colac Districts well into the 1980's.

The family then sold up and moved to South Australia and to a property west of Ceduna and were settled there in 1924. This was the start of a whole new series of moves and adventures with Clarke finally taking it a bit easier at 5 George Street, Stepney (an Adelaide Suburb) and in 1950 writing 'THE STORY OF MY LIFE' as well as building six caravans, but importantly keeping one for himself for trips and fishing excursions. William Henry CLARKE died in 1958.

Article by Lyle Tune.



### MILKING OUR MEMORIES - SUNDAY 20TH FEBRUARY

2.00pm: talk at the Camperdown Botanic Gardens by Pat Walsh.

Please RSVP via CDHS email so that we can advise any changes, we will also post updates on Facebook.

The talk is entitled "*Milking Our Memories: The Rewarding Experience of Writing a Local Memoir*", and has been organised in collaboration with Rob Wuchatsch and sponsored by the Camperdown Historical Society.

Rather than rehash the Walsh story, **the talk will reflect on the experience of researching and publishing the memoir, the irreplaceable importance of memory, and the social and economic changes** referenced in the book.

## POSTSCRIPT TO BEXLEY ARTICLE

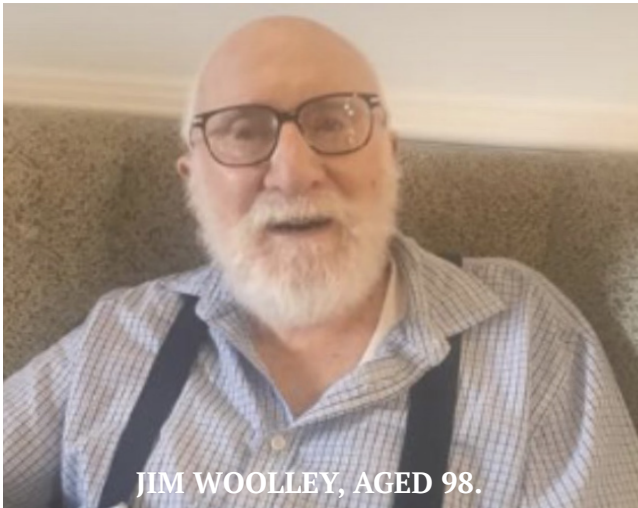
You will recall the article (*October 2021 newsletter*) on 'Bexley' featured the memoirs and photographs of James McAlpine (Jim) Woolley.

Sadly, Jim passed away on 1st December at 'Hill View' on the Gold Coast, having reached 98 years of age just few weeks earlier.

His daughter, Judy Stokes, told of the family reading the newsletter article to Jim, and how much he enjoyed it.

What a wonderful record of his life he has left behind for his descendants!

Judy also kindly sent a copy of the eulogy which included Jim's family life, career, his many community involvements and historical interests. You can read the eulogy here: <https://camperdownhistory.org.au/james-mcalpine-jim-woolley-eulogy/>



JIM WOOLLEY, AGED 98.



FRONT DOOR FROM BEXLEY (NOW AT STEAM LAUNDRY), FROM SANDRA DRAKE

## RESEARCH REQUESTS

As usual, requests have been received on various subjects and places.

**Property information has been supplied** on 4 Talbot Street; 95 Wrights Road; the properties of Donald McLeod at Weerite and East Hill; and Seth Worrall of the Lismore district.

Enquiries were received for information on '**Lake-side**' at **Pomborneit**; the naming of **Lovett Street**, and the **early history of Hopetoun Street** by **member Ken Skene**, who aims to list all residents of that street over the years. Ken is planning to visit the Heritage Centre to take advantage of the **rate books** while we still hold them.

Details of any descendants of those involved in the **Murdering Gully Massacre** were requested by the producers of a planned television program, however, we were not able to assist.

The **Camperdown P & A Society** asked for help with the history of the showgrounds and kindly gifted us copies of various documents, including titles, relating to the land for our files.

Between lockdowns, we had **visits from members of the Anson and Pekin families**, who we were able to help with photos and other information.

**Book orders** have been coming in steadily over the Christmas/New Year break.

*Maree Belyea, Secretary.*

## Memberships & Donations

Thank you to those who have renewed their memberships for the 2021-2022 year.

As can be expected during these unusual times, some have mislaid their renewals, forgotten, or haven't been able to pay dues while the centre has been closed. Emails have been sent recently as a friendly reminder.

We have some very generous members who include a donation to assist with the running of the society and its expenses.

This year, we wish to thank **Lindsay & Rosslyn Bamford, Beth Codling, John Cook, Bruce & Val Gent, Fay Hogan, Maree Hogan, Janet O'Hehir & Gary Moorefield, John McCabe, Angela Preiss, Gerard Ryan, Jock & Marie Thornton, Erica & Natasha Wagner and Veronica Webber** for their extra support. It is very much appreciated.

*Maree Belyea, Secretary.*

## HERITAGE CENTRE BACKYARD CHRISTMAS GATHERING...

In between various shut downs, shut outs and associated Covid19 restrictions, the volunteers at the Heritage Centre managed to get together for a small social gathering for the end of the year.

After a few dedicated people worked for an hour or so on the morning of Tuesday 21st December, it was time to down tools and get out into the sunshine in our new, beautifully designed back garden.

The rest of us, most with partners, turned up in time to enjoy an excellent barbecue and salad lunch and some very pleasant socialising – socially distanced of course.

We look forward to showing off our new garden to visitors as soon as Covid permits.

Gillian Senior.



## COVID RESTRICTIONS & H.C.

Please note that during the first part of this year it has been decided to close the Heritage Centre to the general public, due to local community infection rates and the fact that most of our volunteers are older, and potentially vulnerable at this time.

Please check our website and facebook page for updates as to the re-opening of the Heritage Centre. **\*We're still able to take research requests and assist via email.**

## STOP PRESS! GRANT NEWS

*Our grant application to CHART (Culture, Heritage and Arts Regional Tourism program) has been approved, and payment received.*

*The project is to replace our outdoor signage, including a new A frame.*

*We're looking forward to a refresh and perhaps a new look, which we should be able to show off in the next newsletter.*

## END OF YEAR GATHERING FOR CDHS MEMBERS AT MT ELEPHANT

On 4th December last year a group of about 23 members gathered at the very impressive Mt Elephant Visitor Centre.

For those yet to visit this centre, it's a beautifully designed building set on the side of Mt Elephant and looking out over the volcanic plains around.

We were given a brief history of the centre's development by one of the Derrinallum volunteers, **Lesley Brown**, and then were served a lovely lunch which was included in our booking.

That was followed by an interesting talk from **Chris Lang of Titanga**. Chris gave us a brief outline of the area's volcanic pre-history, Aboriginal history and the use of local native plants for food. Chris is very involved in the growing of native plants and brought along some Yam Daisies (Murnong) that he is currently nurturing.

A couple of members are also involved in growing native plants so Chris kindly gave them his samples to take home.

No time to walk up the mountain after all that but we were able to spend a little time enjoying the views and really interesting displays.

Gillian Senior.



## CABLES FROM MELBOURNE CABLE TRAMS



*All cables for the Melbourne cable tramways were imported. Each cable came as one length. It was uncoiled out of the ship's hold and loaded onto a convoy of horse drawn lorries for its journey to the engine house. This 32,000 foot long cable weighing 37 1/2 tons was landed in 1904 for the city section of the Brunswick line.*

Along County Boundary Road East there are the remains of a long cable which for many years was used for fencing. What's left can be seen, fast rusting away, behind a row of trees near the corner of Black Rock Road.

The original purpose of the cables was to propel Melbourne's cable trams all over Melbourne and suburbs – the first being installed in 1885. These trams continued to operate until they were replaced by electric trams early in the 20th Century.

Eventually, Tramways authorities decided that the cables would have to be removed and a **Camperdown Chronicle of 1931** records an offer of "a quantity of second-hand steel tramway cable" to the Heytesbury Shire Council from the Melbourne and Metropolitan Tramways Board.

It seems this offer was not taken up by the Shire but our investigations have revealed that a large amount was used by Sir Chester Manifold on his property, Talindert.

The cable was extremely heavy and came in incredibly long lengths – as described on the picture below and it is quite puzzling to understand how such a large quantity was transported to Camperdown. However, transported it was, and it was used extensively on the property as external fencing as well as for internal paddocks.

We have been told that **the cable was particularly useful for Sir Chester's horse paddocks**, as it was thick enough for a galloping horse to see it in time to stop before damaging itself on the fencing.

Gillian Senior.



# WILLIE AH SOON

Article by Maree Belyea.

The market gardener photographed in the Bexley article brought forward some interesting comments and information from those remembering him, if only by name.

**Beth Codling (O'Neill)** – Yes, I remember Willie Ah Soon coming along Dodds Street. I even had a short ride in his horse driven wagon when I was a small child. My mother sometimes bought vegetables from him.

**Rosemary Hollis (Fahey)** - WILLIE AH SOON, oh my gosh to hear his name, and to see a photo of him was amazing. I have often thought of him over the years, and wondered what his story was ~ how he came to be in Camperdown, so far from Family and Country etc. There was a saying 'don't put that penny in your mouth, it might have been in Willie Ah Soon's ear'. Isn't that awful, as if it would have fitted anyway.

**Lorna Henry (Davis)** remembers her mother buying vegetables from him in Dowling Street.

**Bruce Gent** – Can identify the location on 'Werna' where Willie's home and market garden was located. A spring in the vicinity ran continually until around the year 2000. The location was east of Clarke Street, not far south of the railway line.

There were many Chinese gardeners employed in Australia, including on district properties and those who worked at the 'Chinese gardens' about 2 miles from Camperdown on the Lismore Road by the 1870's.

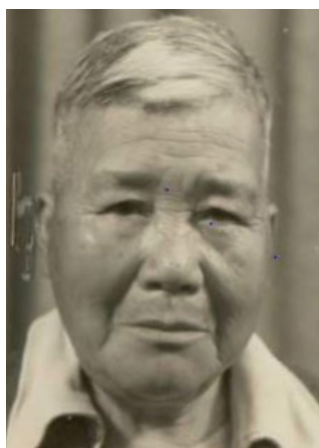
From 1900 the Camperdown Presbyterian Church commenced monthly fellowship services at the Chinese gardens, conducted by Wong Cheon, Chinese catechist of Warrnambool. One newspaper article indicates there were ten attendees. The services continued for about three years.

An accident reported in the Camperdown Chronicle on 2nd June 1903 relates to one of those gardeners, Willie Ah Ton, but was it our Willie?

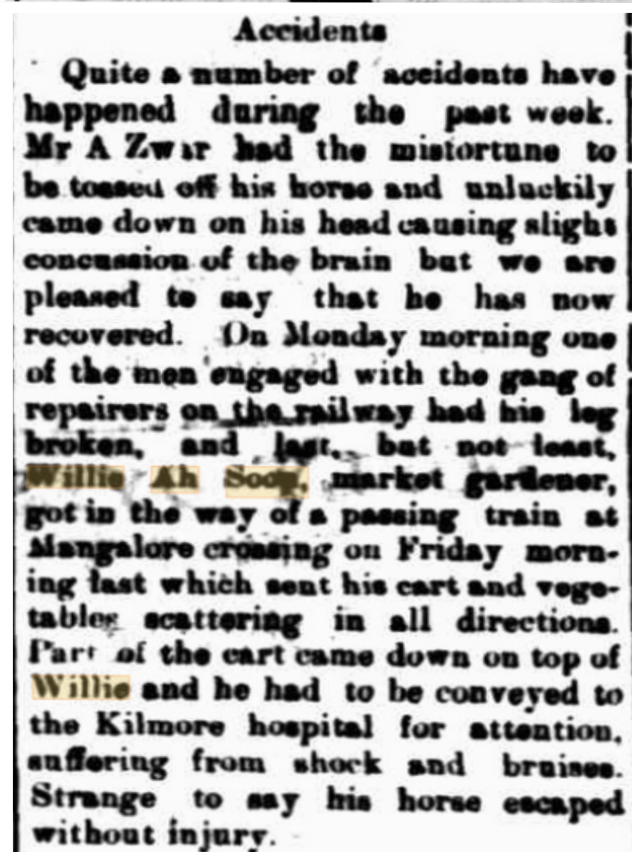
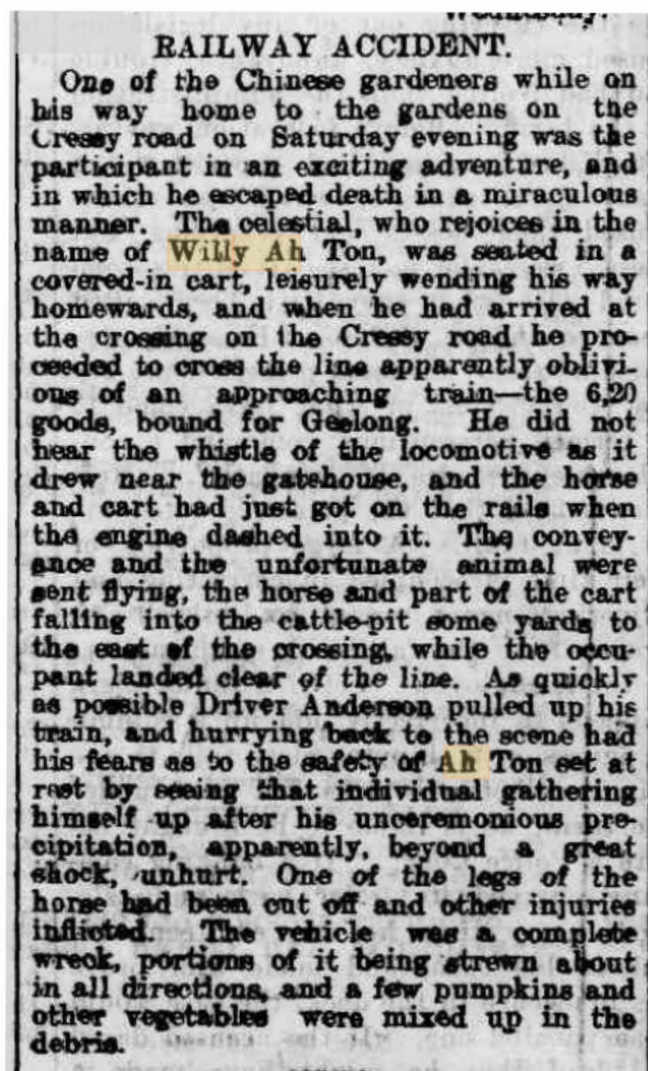
A report in The Age, on the same accident stated his name was Willy Ah San, but referred to him as "John", a name often used to refer to Chinese men.



WILLIE AH SOON - 1939



- 1950

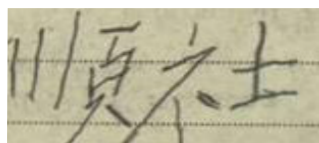




Details in this article indicates this is likely to relate to Willie before coming to, or returning to, Camperdown.

At the outbreak of World War 2 the Commonwealth of Australia required all 'aliens' to apply for registration.

Willie Ah Soon's registration form of 16th October 1939, states he was born in Canton, China, in 1874 and arrived in Melbourne in 1890. He was residing at Camperdown where he was operating as a market gardener. His description is 5 ft 3 inches tall, brown eyes, grey hair and medium build. The form, which also included fingerprints from both hands, was signed by Willie in Chinese, at the Camperdown Police Station.



WILLIE'S SIGNATURE

Mentions in the Camperdown Chronicle of Willie Ah Soon started in April 1940.

### THIEVES RAID CHINESE MARKET GARDEN.

On Wednesday night, thieves raided the market garden of W. Ah Soon, at Camperdown, and removed a quantity of cabbages, cucumbers and other vegetables. The Camperdown police have recovered portion of the loot.

Willie was a highly valued member, and supporter, of the Camperdown community. He regularly donated to many organisations, including the Primary & High Schools, Kindergarten, Hospital and Football Club.

In 1944 he was a supporter at an exhibition of billiards and snooker by world champion Walter Lindrum, held at the Camperdown Club, where £200 was raised for Camperdown Hospital.

In 1948 he took part in a charity knockout **Lightning Football Premiership**, in aid of the 'Miss Camperdown' campaign, with four teams competing - the Commercial, Leura and Hampden Hotels and Lynch's store. **Willie was captain of the Commercial Hotel team (pictured P10)** knocked out after losing their match against Lynch's, who were then beaten by the Leura Hotel in the grand final.

Some of the tongue in cheek 'Training Notes' in the related Camperdown Chronicle article are: - T C Manifold found on tan doing preliminary in morning half-light (Not too "Sirius"); Alex Robertson has been looking for the old navy rigout and should do a good hornpipe; "Little Bourke St. Bomber" (our Willy Ah Soon) will be seen to advantage in ultra modern togs. "Billy the Willy" is only 78.

'Sirius' was a previous Melbourne Cup winner pur-

chased by Sir Chester Manifold for breeding. Alex Robertson was in the Navy during World War 1.

The full article can be found at the below link <https://trove.nla.gov.au/newspaper/article/30153178?searchTerm=in%20aid%20of%20miss%20camperdown>

The days activities raised £160

Willie was a great fan of the 'pictures' on Saturday nights, always arriving at the Theatre Royal early to get his favourite seat, right in front of the screen.

The last mention of Willie in the newspapers is during 1949. He filled in a further Application for Registration under the Aliens Act 1947, in March 1950. Sections not included in his earlier form state he was married to Ah Mee and had a son named Ah Lock, both residing in Canton.

The McDonald family were long time owners of 'Werna', where Willie's home and market garden was located, but sold the property in 1951. Over the following ten years the ownership changed three times before being purchased by Bruce Gent's parents in 1961. By then Willie's home, or hut, no longer existed. It is likely he moved to Melbourne when the McDonald's sold.

Willie died on 27th January 1960 at St Vincent's Hospital. His death certificate states he was aged 84 years; born at Canton in China; married in China at the age of 20 years to Chen Shee; had no children; still married; was a merchant and had been in Australia for 60 years.

Many of these facts differ from those provided by Willie on his Alien Applications, but as provided by an agent, may have been estimates.

Willie's usual place of residence on his death was McCormack Place (apparently off Little Lonsdale Street in Melbourne's Chinatown).

His headstone in Melbourne General Cemetery, has a transcription in Chinese writing.

**Willie Ah Soon spent many years in Camperdown, was highly regarded in the community and is still remembered fondly. It appears he spent the last few years of his life amongst his fellow countrymen in Melbourne's Chinatown, and never returned to his native China.**

Article by Maree Belyea.

Willie featured as a donor of vegetables at every CWA Patriotic Stall from 1941 to 1946.

<p><b>LATEST DONOR TO C.W.A. STALL BOMBED OUT OF CANTON</b></p>	<p><b>VEGETABLES.</b> Our supplies kept us moving all day. "Willy Ah Soon," our Chinese ally, brought a generous supply of the best to give us an early start. An old soldier, he still does his bit by supplying us frequently with the choicest of his growing.</p>	<p><b>CHINESE HELPS LOAN.</b></p>
<p><b>Appreciates Britain's Friendliness With China</b></p>	<p><b>TUESDAY, JUNE 30, WILL BE HOSPITAL DAY.</b> <b>VEGETABLES</b> were good and plentiful. Our old soldier friend Willy Ah Soon loaded up our tables in the morning and returned in the afternoon to replenish stocks.</p>	<p>AMONG subscribers to the Camperdown loan at Tuesday's rally was Mr Willy Ah Soon representative of China—the first great democracy to feel the weight of Japan. The announcement that he had subscribed £10 was greeted with loud cheering.</p>
<p>IN appreciation of the growing spirit of friendliness between China and Britain, and the arrival of Australian troops in the East, Willy Ah Soon has promised a generous supply of vegetables to the Camperdown C.W.A. patriotic stall, each Tuesday. Of all the donors to the stall, Willie alone, can claim the distinction of having been bombed out of Canton.</p>		



**Lightning Premiership team 1948 - Commercial Hotel team**

Back L to R – W Connell, J Ryan, TC Manifold, B Ewence, Gannon, L Driscoll, W Ah Soon, A Robertson. C Bloom, I McCallum, J Stock  
Front L to R – E Ballinger, P Law-Smith, L Currie, J Fitzwilliam, J Downs, C Haugh, M Payne, E Gannon